



ansambel^{AB}
arhitektuurbüroo

AB Ansambel OÜ | Reg kood 10466685 | EP10466685-0001, EL10466685-0001, EK 10466685-0001
Koidu 122 / Planeedi 4-47 | 10131 Tallinn | e-post: ansambel@ansambel.ee

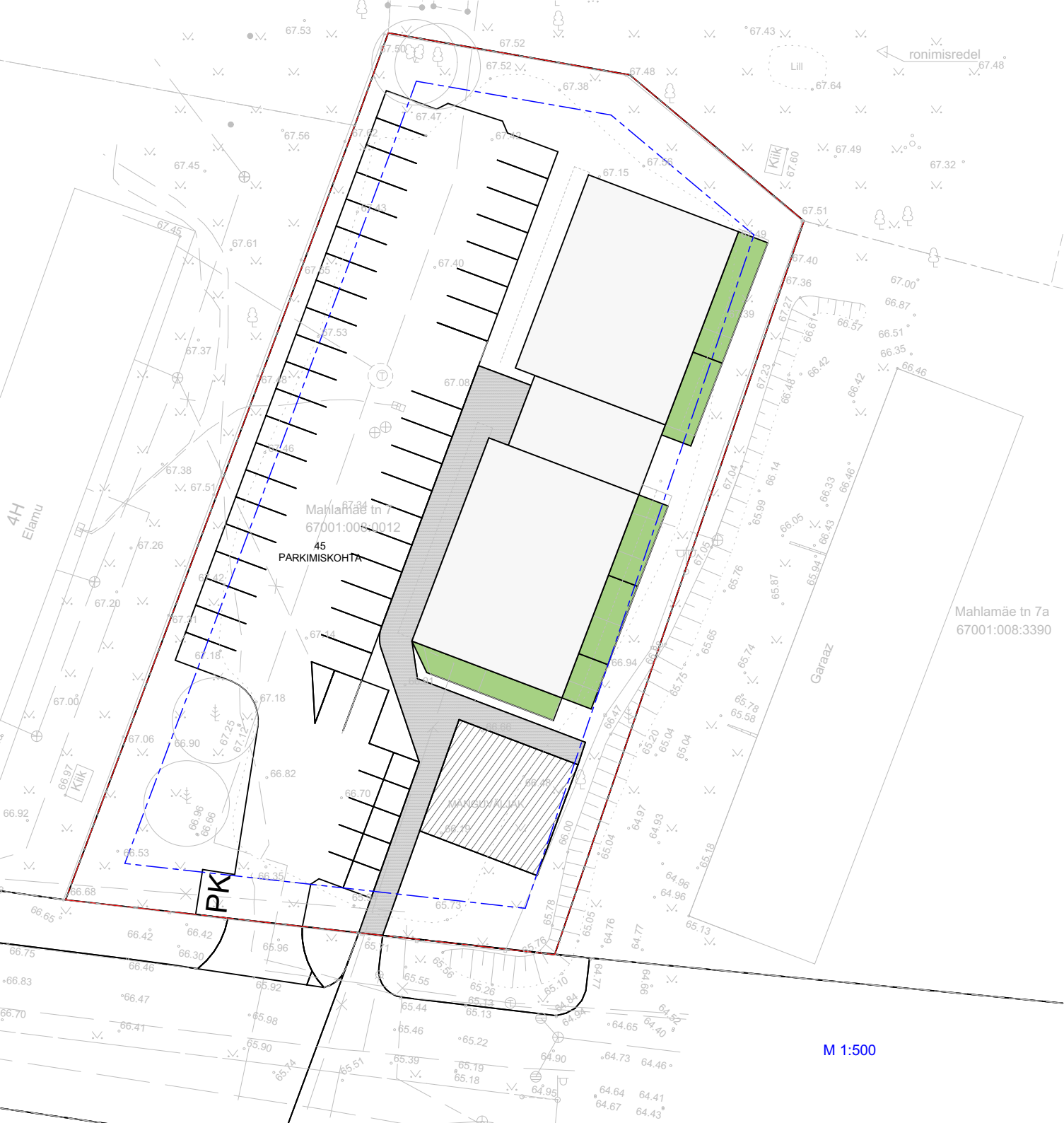






ansambel^{AB}
arhitektuurbüro

AB Ansambel OÜ | Reg kood 10466685 | EP10466685-0001, EL10466685-0001, EK 10466685-0001
Kodu 122 / Planeedi 4-47 | 10131 Tallinn | e-postansambel@ansambel.ee



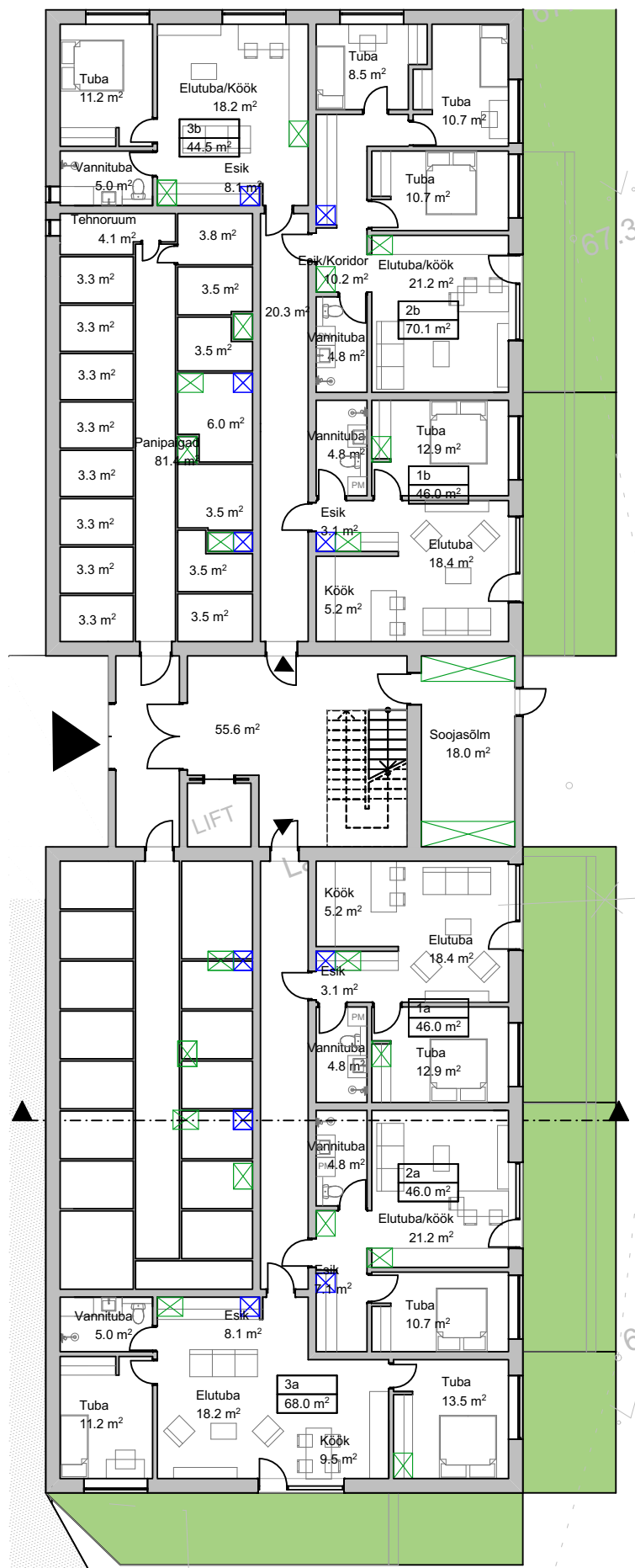
Mahlamäe tn 7
67001:008:0012
45
PARKIMISKOHTA



Mahlamäe tn 7a
67001:008:3390

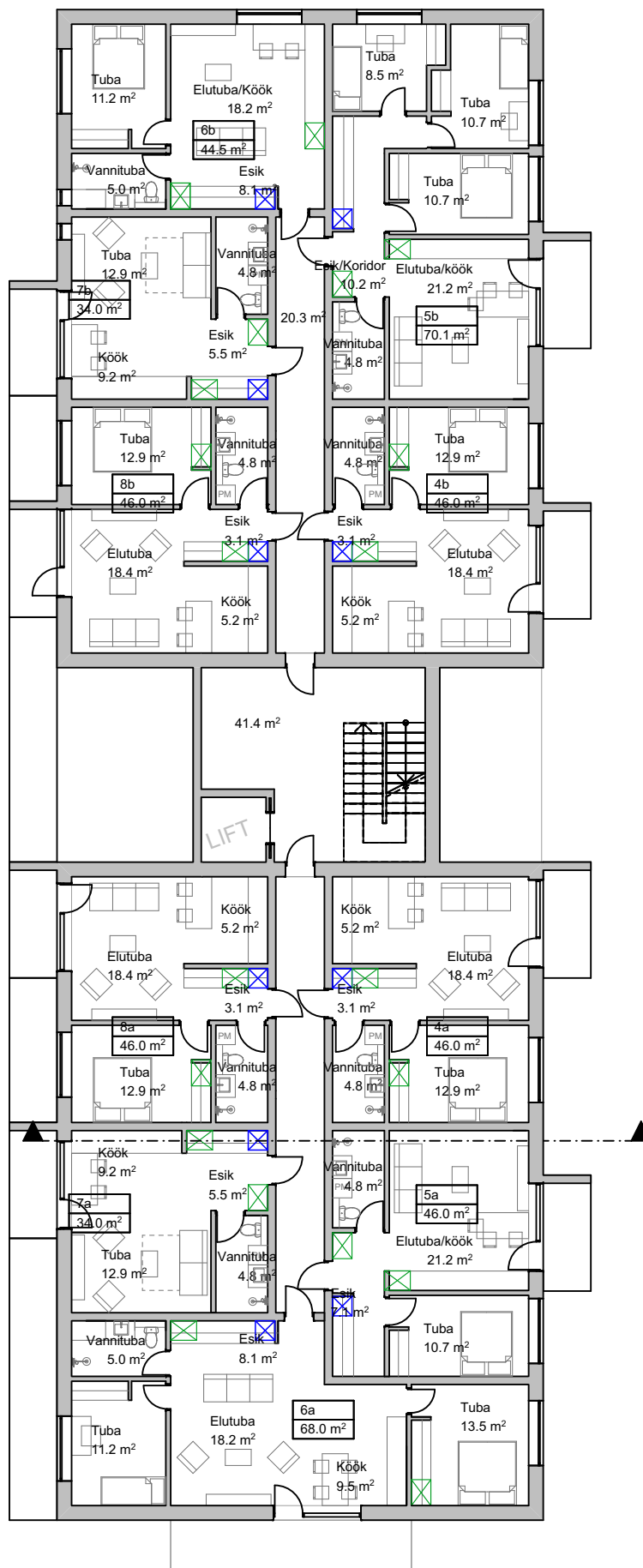
TINGMÄRGID

- KATASTRİÜKSUSE, KINNISTU PIIR
- - - HOONESTUSALA
- KORTERELAMU ASUKOHT
- KORTERELAMU RÖDUDE ASUKOHT
- I KORRUSE KORTERITE AINUKASUTUSES OLEVAD AIAD



M 1:500



-  ventilatsiooniseadme pakutav asukoht
-  šahti pakutav asukoht

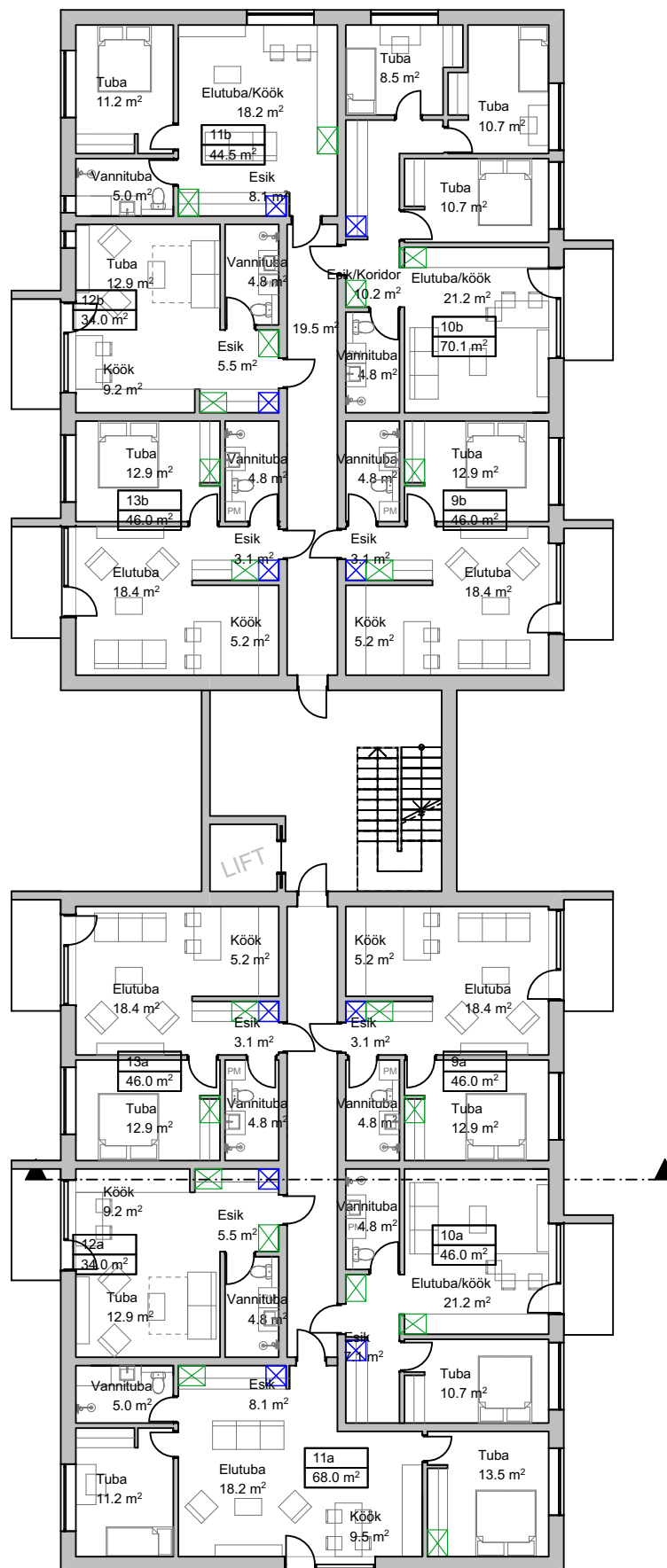


2. korrus



-  ventilatsiooniseadme pakutav asukoht
-  šahti pakutav asukoht

ansambel ^{AB}
arhitektuuribüroo

AB Ansambel OÜ | Reg kood 10466685 | EP10466685-0001, EL10466685-0001, EK 10466685-0001
Koidu 122 / Päänedi 4-47 | 10131 Tallinn | e-post:ansambel@ansambel.ee

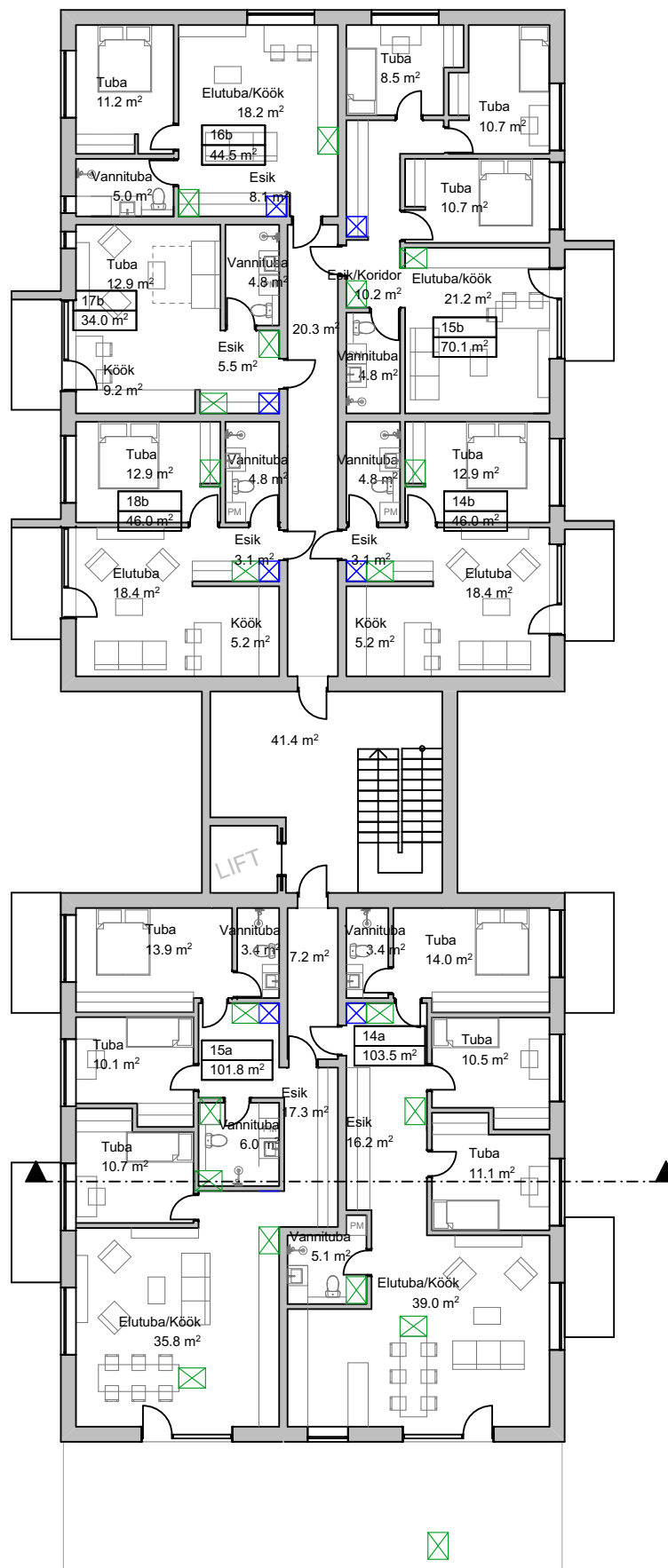


3. korrus



-  ventilatsiooniseadme pakutav asukoht
-  šahti pakutav asukoht

ansambel^{AB}
arhitektuuribüroo

AB Ansambel OÜ | Reg kood 10466685 | EP10466685-0001, EL10466685-0001, EK 10466685-0001
Koidu 122 / Ploomi 4-47 | 10131 Tallinn | e-post:ansambel@ansambel.ee

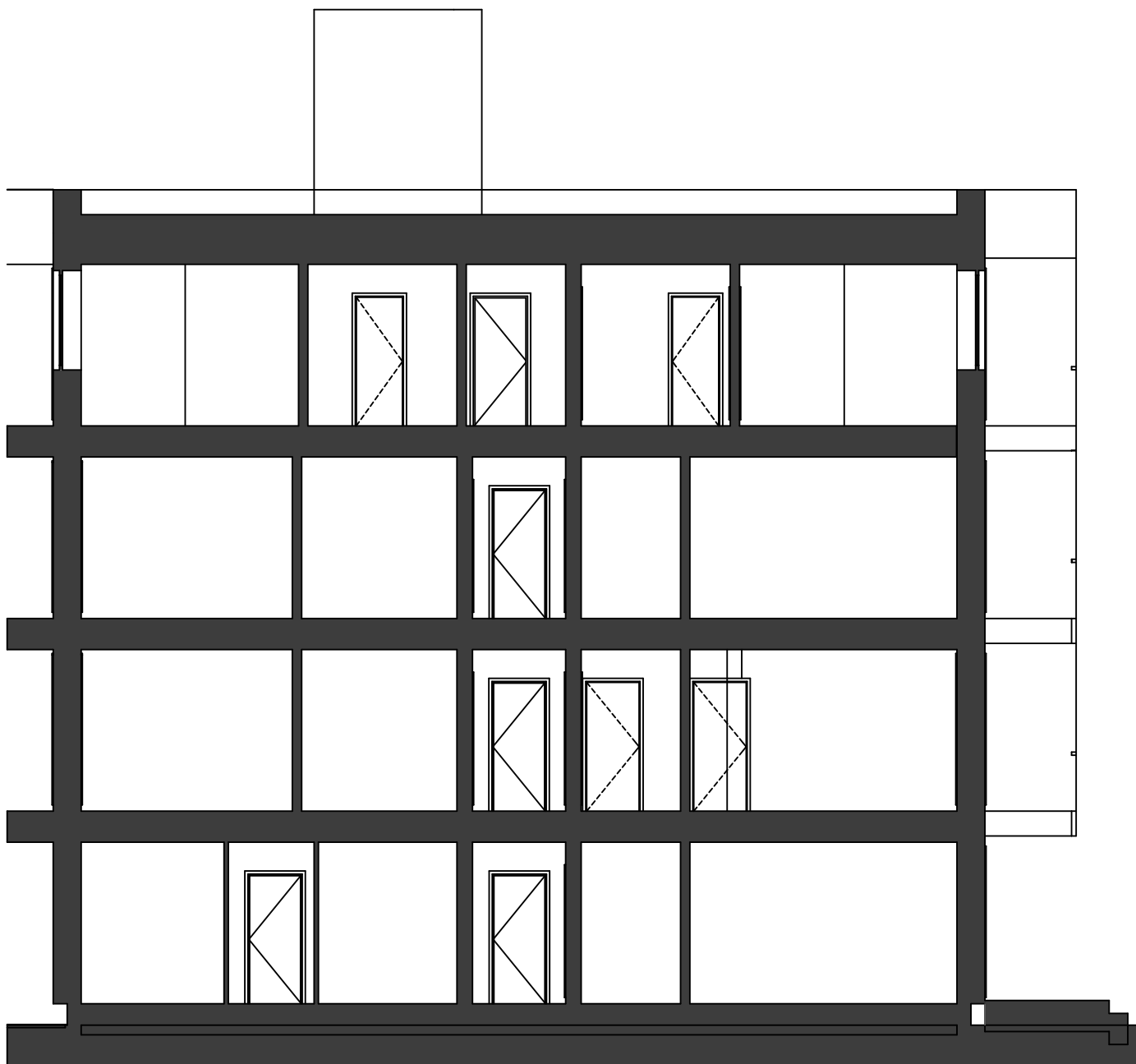


4. korrus

-  ventilatsiooniseadme pakutav asukoht
-  šahti pakutav asukoht

ansambel^{AB}
arhitektuuribüroo

AB Ansambel OÜ | Reg kood 10466685 | EP10466685-0001, EL10466685-0001, EK 10466685-0001
Koidu 122 / Pääsni 4-47 | 10131 Tallinn | e-post: ansambel@ansambel.ee



lõige

A pool

1 KORRUS

KORTERI NR	TUBADE ARV	PIND m ²
1	2	46
2	2	46
3	3	68

Panipaigad 81,4

Koridor 20,3

2 KORRUS

4	2	46
5	2	46
6	3	68
7	1	34
8	2	46

Koridor 20,3

3 KORRUS

9	2	46
10	2	46
11	3	68
12	1	34
13	2	46

Koridor 20,3

4 KORRUS

14		81,4
15		81,4

Koridor 20,3

B pool

1 KORRUS

KORTERI NR	TUBADE ARV	PIND m ²
1	2	46
2	4	70,1
3	2	44,5

Panipaigad 81,4

Koridor 20,3

2 KORRUS

4	2	46
5	4	70,1
6	2	44,5
7	1	34
8	2	46

Koridor 20,3

3 KORRUS

9	2	46
10	4	70,1
11	2	44,5
12	1	34
13	2	46

Koridor 20,3

4 KORRUS

14	2	46
15	4	70,1
16	2	44,5
17	1	34
18	2	76

Koridor 20,3